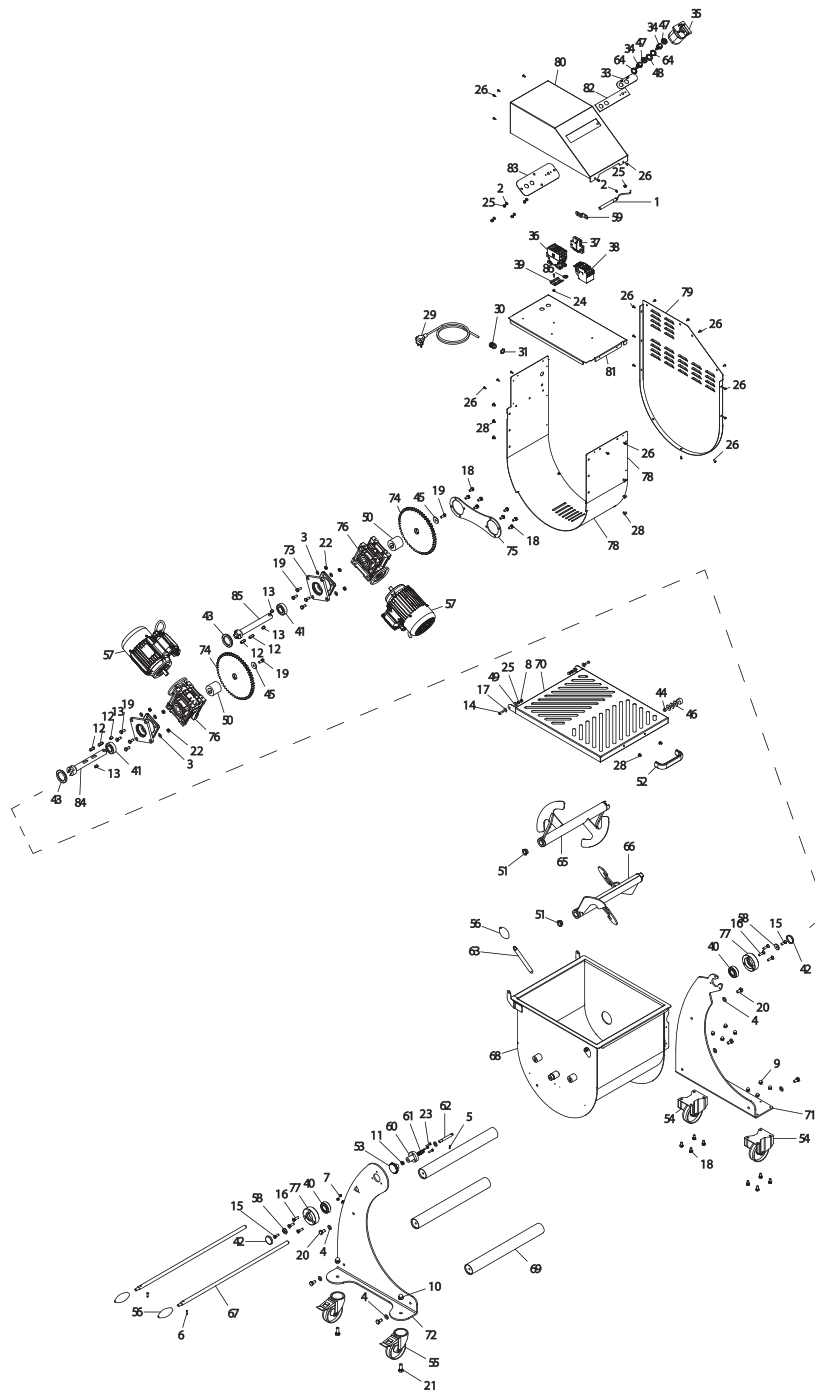


PARTS BREAKDOWN

ITEM	MODEL
48055	MM-IT-0050-ETL



PARTS BREAKDOWN

ITEM	MODEL
48055	MM-IT-0050-ETL

Item No.	Description	Position	Item No.	Description	Position	Item No.	Description	Position
AH077	Magnetic Sensor M12 UL for 48055	1	62667	Flathead Csk Screw Din 963 M5x25 for 48055	23	61610	Zinc Washer M8x30 H4 for 48055	45
62643	Flat Washer Din 125 D 6 for 48055	2	66634	Self-Locking Nut ES Din 982 M4 High for 48055	24	AP727	Nylon Washer D8.4 D25 H2 for 48055	46
62644	Flat Washer Din 125 D 8 for 48055	3	62668	Self-Lock. Hex Nut Din 982 M6, High for 48055	25	AN674	Silicone Capsule x Puls. Steel for 48055	47
62645	Flat Washer Din 125 D 10 for 48055	4	62669	Poeliers M4x10 Screw for 48055	26	AN675	Dist. 19.1x30x2 Black PE x Puls. Stop for 48055	48
62646	Elastic Spine Din 1481 3x18 for 48055	5	66633	Screw Poeliers M4x12 for 48055	27	AN183	Dist. Plast 18x6,4x3 Micro ME-IP 10-20 for 48055	49
62647	Elastic Pin Din 1481 5x20 for 48055	6	60081	Screw Poeliers M6x10 for 48055	28	AG289	Dist. Rid-Corona SP47 ME EVO Lav. for 48055	50
62648	Blind Nut Din 1587 M5 for 48055	7	AM946	Cavo 3x14AWG+Spina UL 15A 250V 3MT for 48055	29	62621	Bush Flange. JFM-1622-12 TCM-ME for 48055	51
61583	Nut Din 1587 M6 for 48055	8	61604	Strain Relief + Nut for 48055	30	18961	Handle - Old Style/Large (L-132mm) for 48055	52
62650	P Nut Din 1587 M8 for 48055	9	61603	Nut Ott.Nich.PG 11 for 48055	31	79656	Kob for Fixing Container for 48055	53
62651	Blind Nut Din 1587 M 12 for 48055	10	AN181	Round Magnet Diam.25 for 48055	32	61556	Stainless Steel Non-Swivel.Caster D.100 for 48055	54
62652	Hex. Nut Din 439 M 10 Low for 48055	11	AM948	Key Pad IS-SO for 48055	33	61579	Mobile Wheel with Brake D 100 C/ Perno for 48055	55
62653	Feathers Din 6885 / A 8x7x28 for 48055	12	AN355	Stainless Steel Button MSM-19 UL Cut Ind for 48055	34	78634	Knob for 48055	56
62654	Feathers Din 6885 / AB 8x7x16 for 48055	13	AP102	Rotary Switch 25AMP for 48055	35	AQ883	Motor M71 HP 0,5 B14 4P 230/60 MN UL CSA for 48055	57
62655	Screw TBEI ISO 7380 M 6x25 for 48055	14	39667	Remote Control AF26-30-00-13 110/230 50/ for 48055	36	61590	Washer SO 1650 Inox for 48055	58
AN185	Screw TSPEI Din 7991 M 8x25 for 48055	15	39668	Contactora with Brake Aus Lat x AF 26-30-00-13 ABB for 48055	37	AN385	Supp. Micro Bending Micro 100W 3A UL for 48055	59
62658	Screw TSPEI Din 7991 M 8x30 for 48055	16	66632	Terminal Protection 13-16A ABB TF 42-16 for 48055	38	61569	Boat Stops Crade for 48055	60
62660	Washer F Wide Din 9021 D 6x18 for 48055	17	66635	Guide Din Omega H.7mm L= 50mm for 48055	39	61571	Spring for 48055	61
62662	Screw TE Din 933 M8x16 T.F. for 48055	18	61586	Bearing 6205 ZZ for 48055	40	61570	Pin for 48055	62
62663	X.Screw Din 933 M8x20 for 48055	19	61597	Bearing Reg. SP 7205 ME 80 Evo for 48055	41	61564	Lever Rod for Container Overturning for 48055	63
62664	Screw TE Din 933 M 10x20 T.F. for 48055	20	61589	Cap 40/7/C Pulley 1C SO1650 for 48055	42	AN676	Nut x Silic Cover. Puls. Steel for 48055	64
62665	Screw TE Din 933 M 12x30 T.F. for 48055	21	61596	Gasket 40-62-7 for 48055	43	AG294	Male Shovel IX IP 50 BA for 48055	65, 66
62666	Hex.Nut Din 934 M8 for 48055	22	AP726	Round Sensor L=2000 SO2020-2400IX for 48055	44	61563	Blade Rod for 48055	67

PARTS BREAKDOWN

ITEM	MODEL
48055	MM-IT-0050-ETL

Item No.	Description	Position	Item No.	Description	Position	Item No.	Description	Position
AG296	Cot Inox ME 50 for 48055	68	62638	Reducer Block Bracket ME 80 Evo for 48055	75	AP733	Sheet 2 Puls. IX ME 80 Evo EL/ETL for 48055	82
AG298	Union Tube Bases ME 50 Evo for 48055	69	62639	Reducer CM50 71 B14 I50 80 Evo for 48055	76	AP734	Sheet Int 2 Puls IX ME 80 Evo EL/ETL for 48055	83
AP728	Basin Cover ME 50 Evo ETL for 48055	70	61585	Shaft Support SX Evo for 48055	77	61595	Transc. Pin Femm L = 220 M and 120 Evo for 48055	84
AG299	Base DX Rid. ME 80 Evo for 48055	71	AP729	Motor Carter Band ME 80 Evo EL/ETL for 48055	78	61598	Transc. Pin Masc L = 220 ME 120 Evo for 48055	85
AG300	Base SX ME 80 Evo for 48055	72	AP730	Motor Carter ME 80 Evo EL/ETL for 48055	79	AM961	Ground Warning Label Diam.22 for 48055	86
61592	Flange Support ME 80 Evo for 48055	73	AP731	Motor Carter Shell ME 80 Evo EL/ETL for 48055	80			
61605	Ring Gear ME 80 Evo for 48055	74	AP732	Motor Shelf ME 80 Evo EL/ETL for 48055	81			